



# GMT MONTHLY MEMBERSHIP PROGRESS REPORT

Results as of: 5/31/2017

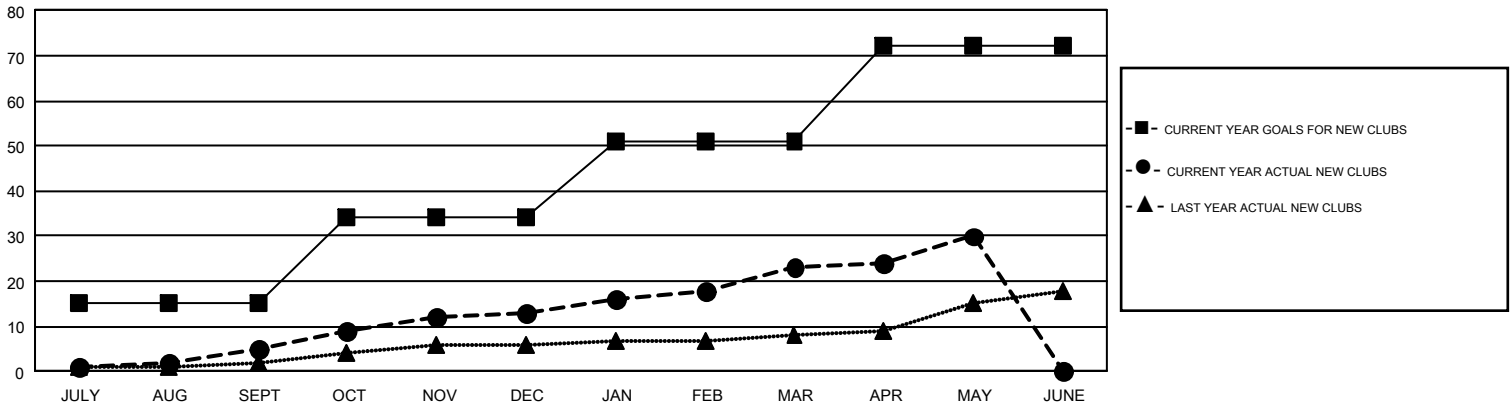
## GMT Constitutional Area 1, Group F

GMT: HAL GRIFFIN

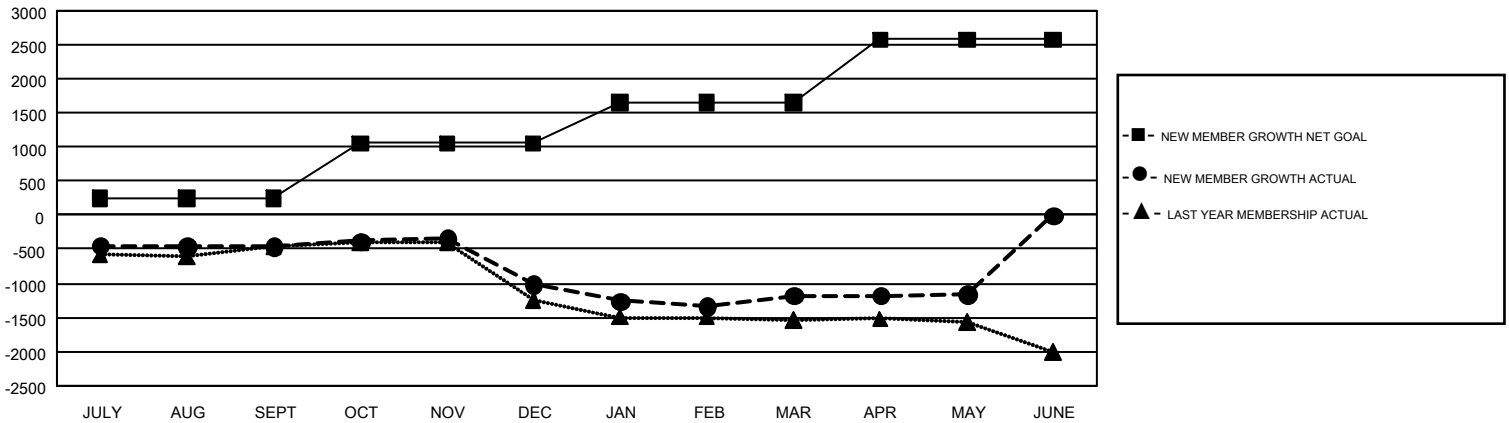
REPORT DOES NOT INCLUDE CLUBS IN UNDISTRICTED AREAS.

Clubs				Members			
RESULTS FOR 2016-2017				RESULTS FOR 2016-2017			
QUARTER	NEW CLUB GOAL	NEW CLUBS	DROPPED CLUBS	QUARTER	NEW MEMBER GROWTH NET GOAL (not reinstated or transfers)	NEW MEMBER GROWTH ACTUAL (not reinstated or transfers)	DROPPED MEMBERS ACTUAL (including transfers)
JULY/AUG/SEPT	15	5	17	JULY/AUG/SEPT	249	1,470	1,926
OCT/NOV/DEC	19	8	21	OCT/NOV/DEC	810	1,282	1,837
JAN/FEB/MAR	17	10	8	JAN/FEB/MAR	595	1,635	1,800
APR/MAY/JUNE	21	7	4	APR/MAY/JUNE	928	1,130	1,109

GOALS AND ACTUAL NEW CLUBS CUMULATIVE



GOALS AND ACTUAL MEMBERS CUMULATIVE



DROPPED CLUBS: 50	1,119 CLUBS OF 1,694 ADDED 1 OR MORE NEW MEMBERS	<b>GENDER DISTRIBUTION</b> MALE                    31,214 (68.20%) FEMALE                   14,555 (31.80%)
<b>DROPPED MEMBERS</b> DECEASED                    540 CLUB CANCELLED               351 OTHER                            5,781 <hr/> TOTAL                            6,672	<a href="#">CLICK HERE FOR CUMULATIVE MEMBERSHIP DATA</a>	TOTAL FAMILY UNIT MEMBERS                    7,003  FAMILY MEMBERS PAYING HALF DUES                    3,582